



PRIN**T**AURUS

Release Notes
PrinTaurus 6.0

The information in this manual was produced with the greatest possible care. However, errors cannot be completely ruled out. Neither the authors nor the company will assume any legal responsibility or liability for any incorrect information this manual may still contain or for any consequences arising from this information.

The information and data contained in this document may be changed without prior notice upon the release of a new version of this program.

The company names, other names and data used in the example are purely fictitious, unless stated otherwise. No part of this documentation may be copied or transferred, irrespective of the method or means – electronically or mechanically – without express written permission from AKI GmbH.

The utility marks, brand names, trade names, etc. used in this documentation may be non-explicitly designated trademarks and as such subject to legal provisions. ZPL (TM) und Zebra (TM) are registered trademarks of Zebra Technologies Inc.

This manual was produced using SCHEMA ST4 Basic Line.

© 2019 – AKI GmbH, Würzburg. All rights reserved.

AKI GmbH
Berliner Platz 9
D-97080 Würzburg
Tel.: +49 (0)931 32155-0
Fax: +49 (0)931 32155-99
Germany

1 Information on installing PrinTaurus 6.0

Notice

Update of versions older than PrinTaurus 5.5

If you are using a PrinTaurus version older than 5.5, please contact the AKI support team before beginning with the installation!

Supported operating systems

PrinTaurus only supports operating systems with an x64 processor architecture on the server side. On the client side x64 processor architectures as well as x86 processor architectures are supported.

Please refer to the respective installation manuals for more details about currently supported operating systems and the requirements for installing the various PrinTaurus program components.

Notice

Using components from a single release version

To make full use of the PrinTaurus functions, please make sure that all the PrinTaurus software components have the same release version!

Your current version

Please send us a current version of your *Landscape* information to support@aki-gmbh after updating PrinTaurus. The *Landscape* information is generated in *Extras* menu of the PrinTaurus GUI.

2 New functions

Support discontinued for versions older than PrinTaurus 5.5

With this version, we are discontinuing support for versions of PrinTaurus older than 5.5.

AKI's General Terms and Conditions concerning Standard Software Maintenance (Paragraph 5.0) in their current wording are not affected.

PrinTaurus User Management - storage of user authorizations for SAP® integration in the database

In the FILE mode of the user management, the user authorizations for administering SAP® instances and their elements can now alternatively be stored in a database. Communication between the GUI and user authorizations no longer takes place directly, but using a new service.

With this form of storage and retrieval of user data, we fulfil the meanwhile more stringent requirements concerning data and access security.

Furthermore, we meet our customer's requests for a more detailed method for assigning authorizations for reading, editing, and deleting SAP® instances and their elements.

User authorizations are still assigned in the *Users* task in the PrinTaurus GUI.

A separate tab has been added for administering the user authorizations for SAP®.

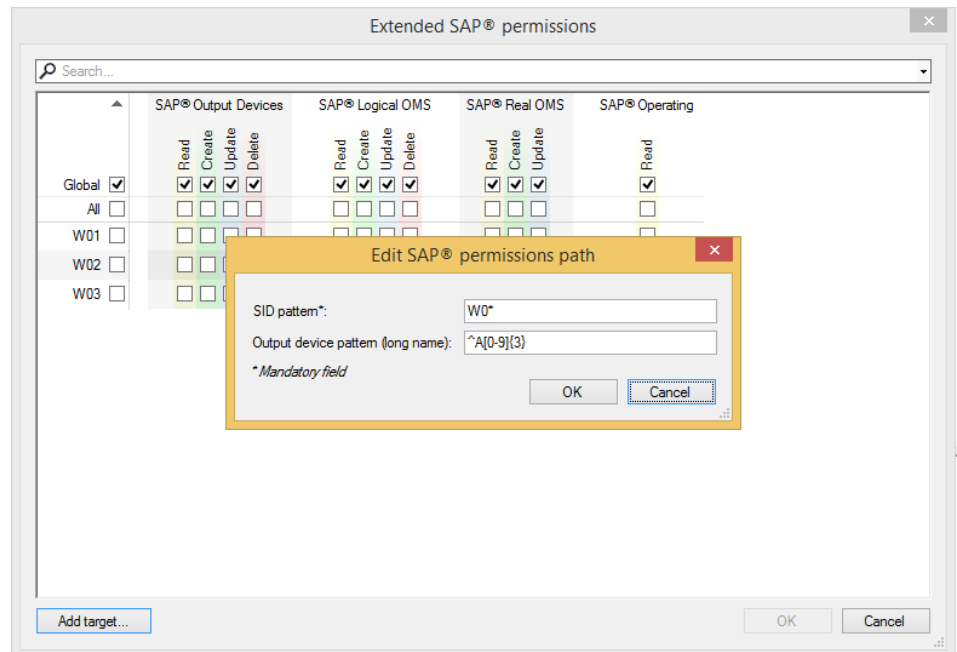
This is where you define the general authorization for administering SAP® instances.

Detailed authorization assignment

User management wizard for SAP® authorizations

With the *Advanced...* button, these authorizations can also be assigned more finely:

- *Global* authorizations apply to all of the available instances in the database, even if SAP® instances are later added to the database.
- *All* authorizations apply for the SAP® instances that are shown in the dialog window when the authorizations were assigned. Authorizations are not automatically assigned for instances that are added to the database at a later time.
- Explicit rights for the individual instances, objects or functions are defined by marking the respective check boxes.
- Dynamic selections (targets) allow you to assign users authorizations for specific output devices or groups on single or multiple instances.



Assigning extended authorizations

Dependencies of rights

If you set a right for which higher-level authorizations are mandatory (for example, if a user is to be able to delete output devices, this must include the right to read the corresponding instance), these are set automatically.

Search and filter function

The search function allows you to filter the displayed instances and also to set authorizations in the filter results.

Enforcement

The setting of authorizations is enforced through to the print server, and consequently influences the functions *PrinTaurus QOperator* and *PrinTaurus QConfigurator* and the *advanced deleting* of printer queues.

Dynamic selection via SID

You can filter the instance names (SID) and group them together by creating so-called targets. This allows authorizations to be assigned, for example for all instances with the SID content W0* or T?.

This selection also behaves globally, i.e. the authorizations assigned for the selection are also assigned for a new instance that is added to the database and meets the selection criteria.

You can also restrict the display of output devices to these instances using regular expressions (e.g. only the output devices A001-A999).

A detailed description of the new User Management can be found in the document *PrinTaurus User Management 6.0.pdf* in the release download data.

PrinTaurus for SAP® - transaction logging action

Changes to the PrinTaurus ERP Solution Service result in more data being recorded in the transaction log file. This can cause the transaction log to become extremely large.

To avoid malfunctions caused by a bloated transaction log file, change the logging action for the transaction log to SIMPLE.

This is done with the call `ALTER DATABASE yourdb SET RECOVERY SIMPLE`.

You can also find information about this at

<https://dba.stackexchange.com/questions/29829/why-does-the-transaction-log-keep-growing-or-run-out-of-space/29830#29830>

PrinTaurus for SAP® - support for SAP.Net Connector 3.0 for .Net Framework 4.0

From this version, PrinTaurus now supports SAP® .Net Connector 3.0 for .NET Framework 4.0.

For a new installation, the SAP® .Net-Connector must be installed with the corresponding MSI. The required .dll files are automatically registered in the Global Assembly Cache (GAC).

If older versions of SAP® .Net Connector are already being used, to install SAP® .NET Connector 3.0 for .NET Framework 4.0 run the appropriate MSI and delete the previously used .dll files from the program directories for the PrinTaurus GUI, the PrinTaurus Commander Service and the PrinTaurus ERP Solution Service.

PrinTaurus Automation Interface – launching an executable file

A new action has been implemented for the PrinTaurus Automation Interface which enables you to launch an executable file for creating *ErpJobs*. You can use this to control individual workflows, modify SAP® database tables, or run other programs (e.g. to send an email after an error has occurred).

To do this, the new action *RunBinary* has been added to the `automate.xsd` schema which allows any local executable file to be run on the computer on which the ERP Solution Service is also running.

- Arguments must be specified with the tag *Parameters*. They are not optional.
 - The placeholder %u can be entered in the arguments (upper/lower case is taken into account).
 - If `AutoQ.exe` is called with `-i`, %u is replaced by the Windows user name for the user who has called `AutoQ.exe` to write the job.
 - Stating %u without using `-i` will result in an error.
- The command line switch `-i` has been added to `AutoQ.exe`.
 - When creating a job with `AutoQ.exe -f <FileName> -u admin -p admin -i`, the Windows user name is entered in the list of parameters for each action.
 - It is entered in the list of parameters as *WindowsUserName*.

- Up to now, the name is only evaluated and used by the action *RunBinary*.
- The binary must be entered with the absolute path in the PrinTaurus database:
Table: Configuration
Category: AutoQ
Name: AllowedBinary
 - Only one binary is allowed.
 - For security reasons, the *Configuration* table should be protected against being accessed by unauthorized users when using AutoQ.
- *RunBinary* is only implemented for ErpJobs.

Support for Windows Server 2019

With this version, PrinTaurus can also be run on Windows Server 2019 operating systems.

The following points must be observed when using Windows Server 2019 operating systems:

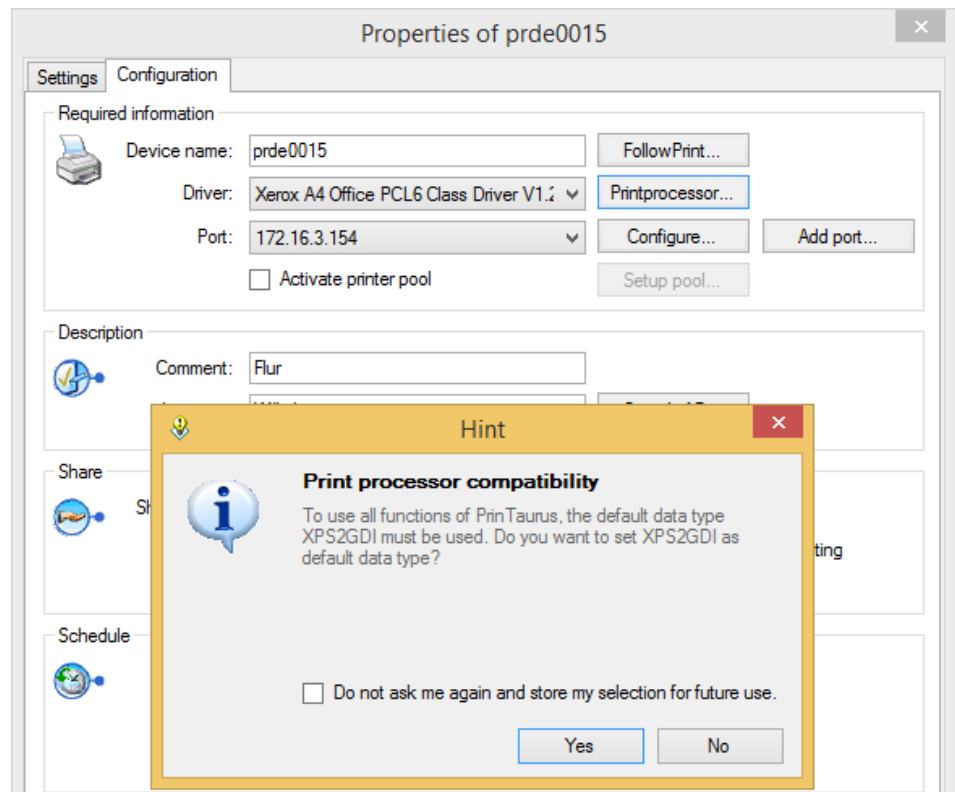
Printer queues with V4 drivers

Due to changes on the part of Windows it is no longer possible sending print-files RAW to a print queue with V4 driver (amongst other things this also effects the SAP implementation and the PrinTaurus PortMonitor). The print files are considered to be printed (a positive feedback is given to SAP; the PortMonitor logs the print file as being printed) but they are not processed correctly.

You can correct this behavior by setting the printprocessor XPS2GDI as standard type for *winprint*.

In the PrinTaurus GUI

- the print processor is set to XPS2GDI by default when creating a queue
- a dialoge is displayed when changing a queue, asking if standard data type XPS2GDI should be used for queues with V4 drivers. The setting can be memorised for future entries.



Setting XPS2GDI as standard type

Removed feature under Windows

The print and document services are deactivated under Windows 2019 by default. If you want to change this, you can run the `cmdlet InstallWindowsFeature Print-Services` or activate the services using the Server Manager.

<https://docs.microsoft.com/de-de/windows-server/get-started-19/removed-features-19>

Changes to LPD

The LPD is generally no longer able to spool print jobs to printer queues with v4 drivers. Printer queues with v3 drivers are not affected.

The LPD generally rejects all local queries (in this case, print files that originate from the same computer). The same queries (`lpr` and `lpq`) from a remote computer will continue to be processed correctly.

The exception to this are printer queues with a v4 driver.

Redirecting printer queues with V4 drivers to printer queues with V3 drivers only works if the RAW print file in the printer queue was spooled with the V4 driver.

If this condition is not fulfilled, the print file cannot be redirected by either drag&drop or routing.

PrinTaurus Economist – authentication of server-side email dispatch

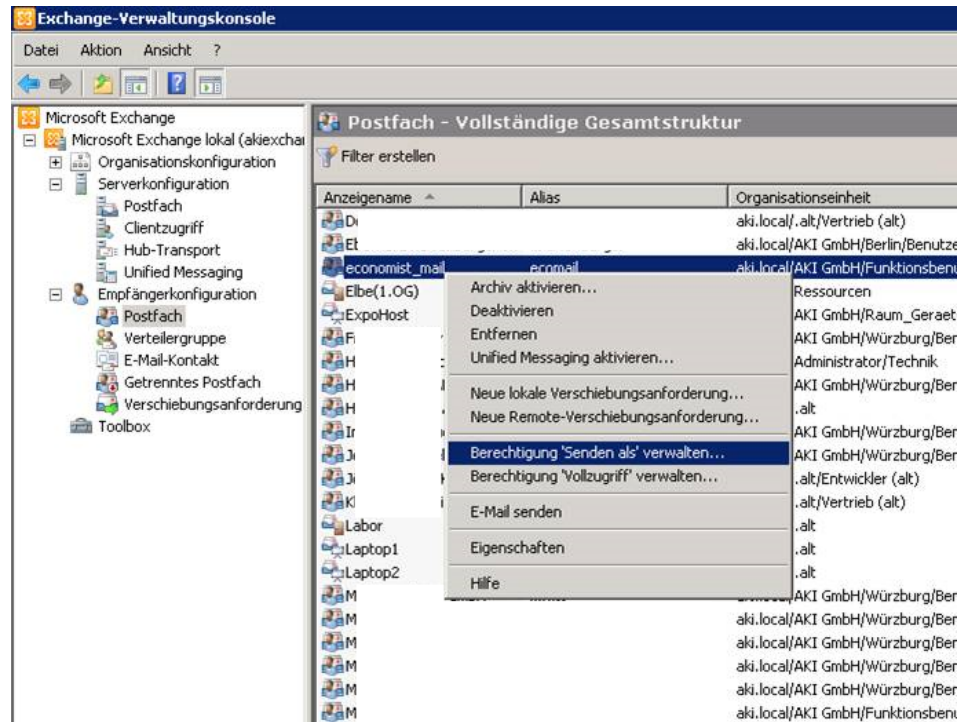
In PrinTaurus Economist, emails can now also be sent that require authentication (SMTP) from the server.

The authentication details are entered in the PrinTaurus GUI in the *Economist* task.

To do this, in the Economist context menu open its *Properties* and click the *Email Settings* tab.

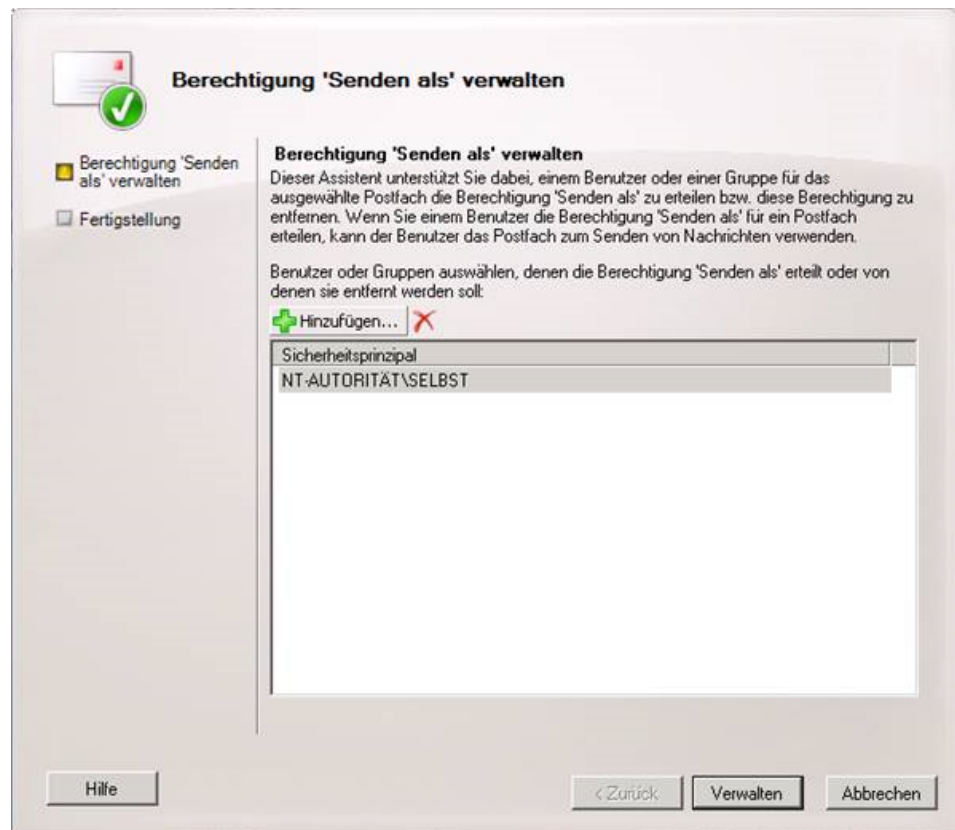
As well as the known settings, you can use the *Login Data...* buttons to enter the access data for the Delegation Service and Report Service respectively.

Please note: The Economist mail user must be created on the Exchange mail server.



Configuration of the Economist mail user on the Exchange server

This Economist mail user must be assigned *Send As* authorization.



Assigning *Send As* authorization for economist mail users

3 Changes in detail

- | | |
|--------------------------|--|
| Database integration | <ul style="list-style-type: none">• SAP® systems are now assigned and the tree view is built up significantly more quickly. In certain constellations, a performance gain of 96% was achieved, and the PrinTaurus GUI no longer freezes when establishing the connection. |
| PrinTaurus Commander | <ul style="list-style-type: none">• Up to this version, user names were written in plain text to the <code>.csv</code> and <code>.xls</code> files when logging print jobs. To fulfil the meanwhile more stringent data protection requirements, you can now anonymise user names. To do this, in the registry path <code>[HKEY_LOCAL_MACHINE\SYSTEM\CurrentControlSet\Services\PMConSrv\Parameters]</code> create the <code>DWORD</code> value <code>AccountingAnonymizedUsernames</code>. Set the value to 1. If this is not present or it is 0, the feature is disabled.• If printer queues with the same configuration have been created by using both PrinTaurus and Windows tools, inconsistencies between the configurations of the printer queues could arise when certain driver settings have been modified. This is now prevented. |
| PrinTaurus GUI | <ul style="list-style-type: none">• When using the <i>send Landscape information via email</i> function to send information to AKI, in some cases <code>ptcmd.exe</code> used to be terminated without any further details. This bug has been fixed.
The feature cannot be used if the PrinTaurus GUI was launched with higher-level rights (e.g. as administrator).• The option for specifying a file viewer for ZPL files has been added to the program settings.• The latest possible browser version for the operating system for the PrinTaurus GUI is specified during the installation for the best rendition of printer websites and other HTML pages.• In the <i>Devices</i> task, the column <i>Last Usage</i> has been extended for printer queues (analog to the <i>Configuration</i> task). |
| PrinTaurus QSynchronizer | <ul style="list-style-type: none">• The individual sort sequence of the list view for the output devices, LOMS and ROMS is now preserved after the view is updated or when switching to the views. The sort sequence is also stored in the <code>.ptc</code> file. |
| PrinTaurus AutoQ | <ul style="list-style-type: none">• If the settings for a print server were exported from the PrinTaurus GUI in the configuration view as an XML file, only the queue would be exported for the element <code><hostname></code> for PrinTaurus ports with port 515 instead of <code>Queue@Servername</code>.
This has been fixed for PrinTaurus ports 515 and 31827 and for standard TCP/IP ports (with port 515).• The advanced settings <i>Try again after x second(s) after a connection failure</i> and <i>Try to re-establish connection for maximum x times</i> in PortMonitor have been added in the <code>automate.xsd</code> schema. The new parameters are called <code>RetryInterval</code> and <code>RetryCount</code> and can be set with the intervals 0-999. |
| PrinTaurus SmartSpread | <ul style="list-style-type: none">• If the SmartSpread master server was manually set to maintenance mode in the PrinTaurus GUI, in certain constellations this change would not be detected. As a result, the clients were not automatically mapped to the backup server. |

- In certain constellations, an error message was displayed when the default printer on a Windows 7 64-bit client was to be set using the SmartSpread client. This bug has been fixed.
 - In some cases, PrinTaurus SmartSpread triggered a high network load on the primary print server. As a result, mappings to the clients were lost or could not be recreated. This bug has been fixed.
 - The new command line parameter `-rrq` (*RemoveRemoteQueues*) has been implemented:
When the SmartSpread Client is started up, all the printer queues set up on the client are initially removed. Whether these are administered by SmartSpread or not is irrelevant. Local print queues are preserved. The SmartSpread client then starts up as usual and maps the assigned printer queues according to the configuration. Without `-rrq`, connected printer queues are not disconnected.
 - Problems with memory usage could occur when querying the Active Directory. This has been corrected by adapting the Webservice.
- lpnt.exe
- `lpnt.exe` is a command line program which is used in PortMonitor. It can be used to send print files to different printer queues that are accessible in the network. The program is included with the PrinTaurus services. The use of `lpnt.exe` has been extended so that files can now also be printed using the LPR protocol via ports other than port 515. To do this, the port numbers (separated by commas) are entered in the registry key for *PortMonitor* under `[HKEY_LOCAL_MACHINE\SYSTEM\CurrentControlSet\Control\Print\Monitors\PMC Portmon]` in the value *LprPossiblePorts*.
The change is applied after restarting the spooler. The default port number 515 does not have to be stated in the registry value.
- PrinTaurus for SAP®
- On SAP® systems ≥ 7.4 , malfunctions could occur when using print options due to a missing definition for a print option. This has been fixed with a new transfer file.
 - The data for the clients in a SAP® system is now also replicated in the database.
 - When connecting a SAP® system using the group/server selection function, the group name is now shown in the list of SAP® systems instead of the instance number. It is now therefore immediately evident that this is a SAP® group and not a single SAP® system.
 - When opening the properties of a SAP® instance in large environments with a double-click, in some cases the configuration data would not be replicated. This bug has been fixed.
- PrinTaurus Services.msi
- When running an update for `PrinTaurus Services.msi`, the parameters of the corresponding registry key are now saved as well. The existing key values are preserved when running an update.
- PrinTaurus User Management
- When using LDAP mode in combination with certain program versions of the PrinTaurus GUI and the PrinTaurus Commander Services, the GUI could crash when calling the *Search from DN...* function in the user management. This bug has been fixed.

PrinTaurus DriverServer	<ul style="list-style-type: none">• If drivers had been installed on a print server with an English operating system, and these printer queues were connected with this driver to clients running a German operating system, malfunctions could occasionally occur. This behaviour was corrected by changing how the required driver files are determined.
System requirements	Please contact our sales or support team if you have any questions about this topic, or if you need assistance migrating to a newer version of Windows Server.

Notice**Discontinuation of support for Windows Server 2003**

Microsoft Windows Server 2003 is no longer supported as of this version.

Notice**Discontinuation of support for Microsoft Windows XP clients**

Microsoft Windows XP clients are no longer supported as of this version.

Notice**Discontinuation of support for Microsoft Windows Vista, Microsoft Windows 7, Microsoft Windows Server 2008 and Microsoft Windows Server 2008 R2 as of 30.06.2020**

With this version, please note that as of 30.06.2020 we will no longer offer support for Microsoft Windows Vista and Microsoft Windows 7, as well as for Microsoft Windows Server 2008 and Microsoft Windows Server 2008 R2 for the PrinTaurus product suite.

4 Service and file versions

General	<ul style="list-style-type: none"> • AkiCommons.dll: 1.0.6970.17758 (ERP Solution Service) • AkiCommons.dll: 1.0.7159.29600 (GUI)
PrinTaurus GUI	<ul style="list-style-type: none"> • ptcmd.exe: 6.0.7205.24871 • ptcmd32.exe: 6.0.0.0 • SmartSpreadImportAssingments.xsd: Schema version: 1.53 • AssignmentCreator.exe: 1.6.6893.27474 / 5.9.4.0
PrinTaurus Commander Service	<ul style="list-style-type: none"> • pmconsvr.exe: 3.10.31 • <i>pmcd: 2.01.25</i> (available for UniSpool 6.12 and 6.23) • PrinTaurus21.dll: 1. 0. 3. 0 • ResQueueSyncService.exe: 1.1.7201.25972 • PMCResQueue.exe: 1.2.0.5 • CopyService.exe: 1.0.0.7 • PMCFollowPrint.exe: 1.03.38 • AutoQ.exe: 1.1.7207.28284 / 6.0 • automate.xsd: 1.45
PrinTaurus Service	<ul style="list-style-type: none"> • PrinTaurusService.exe: 6.0.7202.23014
PrinTaurus Service database	<ul style="list-style-type: none"> • Database schema: Version 2
PrinTaurus for SAP®	<ul style="list-style-type: none"> • Transport file: 1.0.55.0 • HANetXOM.exe: 1.9.3.0 • netXOM.exe: 1.1.0.4 • xomd.Net.exe: 1.0.9.41 / 5.9.4 • <i>XOMD: 1.09.30</i> • PTXOMCBD.exe: 1.9.6890.20026 / 5.9.4 • pmcqcfgd.exe: 1.0.15.0 • <i>hanetxom: 1.09.30</i> • <i>netxom: 1.1.0.4</i> • <i>pmcqcfgd: 1.0.12.0</i>
PrinTaurus for SAP® - database version	<ul style="list-style-type: none"> • ERPSolutionService.exe: 1.2.7202.15567 / 6.0.0.0
PrinTaurus PortMonitor	<ul style="list-style-type: none"> • pmcmon.dll: 1.9.9.9 / 5.8.0.0 • pmcmonui.dll: 1.9.9.9 / 5.8.0.0
PrinTaurus SmartSpread	<ul style="list-style-type: none"> • PtSmartSpreadClient.exe: 1.7.7170.22291 • PtSmartSpreadService.dll: 1.7.7170.22280 • PtSmartSpreadSharedLibrary.dll: 1.7.7170.22275
PrinTaurus - database version	<ul style="list-style-type: none"> • PrinTaurusCS.exe: 5.9.1.3 / 5.9.1.0 • PrinTaurusDS.exe: 6.0.7212.15767 • PrinTaurusPS.exe: 5.9.7209.25462

Database	<ul style="list-style-type: none">• PrinTaurusRS.exe: 6.0.7209.26049• AutoQ.exe: 1.1.6893.27301 / 5.9.4• Conf2EnterpriseDb.exe: 1.0.5.0• EconomistDbKeeper.exe: 2.2.7201.25441• Database schema version: 6.0• AllTables.sql: Check-In: 19.09.2019 14:07:25
MSI versions	<ul style="list-style-type: none">• PrinTaurus GUI x64.msi: 6.0.240• PrinTaurus GUI x86.msi: 6.0.240• PrinTaurus Services.msi: 6.0.58• PrinTaurus Service.msi: 6.0.25• PrinTaurus ERP Solution Service.msi: 6.0.36• PrinTaurus NetXom.msi: 6.0• PrinTaurus QConfigurator.msi: 6.0.4• PrinTaurus SmartSpread Client x64.msi: 6.0.29• PrinTaurus SmartSpread Client x86.msi: 6.0.29• PrinTaurus SmartSpread Webservice.msi: 6.0.26• PrinTaurus Economist Configuration Service.msi: 6.0.17• PrinTaurus Economist.msi: 6.0.24

Italic marks refer to Unix components.

5 Support contact details

If you require more information about PrinTaurus or you have any specific questions about individual features, our support department will be glad to help you within the scope of your contractual agreement.

You can reach the support team

by phone at:

+49-931-32155-55

or send an e-mail to:

support@aki-gmbh.com